

INDASA



# INDASA ACADEMY

The Academy represents our commitment to the delivery of preparation and finishing expertise to our trade partners.

INDASA know-how has been at the forefront of supplying innovative materials to the painter and decorator trades for over 40 years.

Experienced industry and technical resource to optimise the skill base of the workforce.

The very latest material technology to maximise efficiency on the job.

## INDASA DECORATOR'S ESSENTIALS

**Maximising productivity and delivering customer satisfaction is a shared objective.**

The decorative market has the most engaging industry professionals. Responding to feedback is paramount to ensure continuity of service and customer value. We acknowledge that in many cases the responsibility for preparation lies with the person producing the finish.

At INDASA, our technical and manufacturing expertise combine to optimise efficiency throughout the entire decorative process. Being better prepared has never been so critical with any surface preparation.

## PROFESSIONAL *SANDING SYSTEMS*

For more information on how INDASA can improve your painting and decorating performance contact:



INDASA

INDASA Abrasives (UK) Ltd

Viking Works, Greenstead Road,  
Colchester, Essex, CO1 2ST  
Telephone: 01206 870366  
Email: [tradecontact@indasa.co.uk](mailto:tradecontact@indasa.co.uk)  
[www.indasa-abrasives.com](http://www.indasa-abrasives.com)

   Find us @INDASAUK

PREPARATION PROCESS GUIDE

## ***PAINTING & DECORATING***



**PREPARE**  
INSPECT, REPAIR, CLEAN

**PROTECT**  
MASK, COVER

**PAINT**  
PRIME, FINISH



## DECORATIVE PROCESS GUIDE



HEALTH AND SAFETY COMPLIANCE IS REQUIRED FOR ALL PROCESSES



## OLD PAINT / WOOD

### 1 Sand the old painted surface to prepare for the application of filler



**METHOD**  
Machine sand or hand sand the surface area.

**PRODUCT**  
Rhynogrip HT Line 15H disc P80  
Heavy Line abrasive roll P80

**EQUIPMENT**  
E-Series orbital palm sander with 5mm orbit  
Dust extraction vacuum

### 4 Shape the filler to match surface area



**METHOD**  
Hand sand or machine sand the filler to a smooth surface.

**PRODUCT**  
Rhynogrip HT Line 15H discs P120  
Yellow Line abrasive roll P120

**EQUIPMENT**  
E-Series orbital palm sander with 5mm orbit  
Dust extraction vacuum

### 2 Protection masking for the surrounding surface area



**METHOD**  
Pull the required length of tape and film to the desired area. Align the required length of cover roll to the repair area and cut with a safety blade. Unfold the film and mask it to the surface.

**PRODUCT**  
Masking cover roll  
Masking tape  
Safety blade

### 5 Thoroughly inspect & clean the surface area



**METHOD**  
Remove all dust/dirt particles from the surface area leaving it clean and dry. Use sugar soap cleaner to remove marks.

**PRODUCT**  
Low tack cloth  
Sugar soap

### 3 Apply filler to the repair area



**METHOD**  
Remove all dust/dirt particles from the surface area leaving it clean and dry. Apply suitable filler to the repair area.

**PRODUCT**  
Low tack cloth  
Filler

### 6 Between coats



**METHOD**  
Apply first coat of paint.\*  
After drying, hand sand the first coat to remove dust/dirt particles from the surface. Apply second coat of paint.\*  
Repeat until required finish.

**PRODUCT**  
Plus Line abrasive roll P180 - P320  
Low tack cloth  
Paint roller/ brush  
Tray

**EQUIPMENT**  
Hand sanding block

\*Refer to the paint manufacturers specification for application process.

## NEW PLASTER

### 1 Sand any new plaster imperfections to a smooth finish



**METHOD**  
Hand sand surface area to a smooth finish. Remove all dust/dirt particles from the surface area leaving it clean and dry.

**PRODUCT**  
Yellow Line abrasive roll P120 - P180  
Low tack cloth

### 2 Protection masking for the surrounding surface area



**METHOD**  
Pull the required length of tape and film to the desired area. Securely attach the masking tape and cut with a safety blade. Unfold the film and mask it to the surface.

**PRODUCT**  
Masking cover roll  
Masking tape  
Safety blade

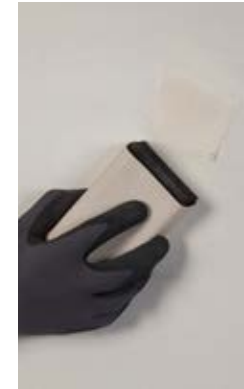
### 3 Apply filler to the repair area



**METHOD**  
Apply first/mist coat of paint\*  
Apply suitable filler to the repair area.

**PRODUCT**  
Filler  
Paint roller  
Tray

### 4 Sand the filler to match surface area



**METHOD**  
Hand sand or machine sand the filler to a smooth finish. Remove all dust/dirt particles from the surface area leaving it clean and dry. Apply second coat of paint.\*  
Repeat until required finish.

**PRODUCT**  
Plus Line abrasive roll P180 - P320  
Low tack cloth  
Paint roller  
Tray

\*Refer to the paint manufacturers specification for application process.